



CASE STUDY – LITTLE MOONS

THE BRIEF

Little Moons were looking for a partner for a large-scale recruitment project. Executive Network Group & HSE Recruitment, alongside our parent company Pertemps, were asked to tender for this showcasing how we could cover the variety of disciplines and sectors that Little Moons needed to focus on.

Pertemps were able to focus on the more operational and high volume areas for Little Moons, but the combination of that with Executive Network Groups specialist knowledge in mid to senior critical hire roles is what swung the project in our favour.

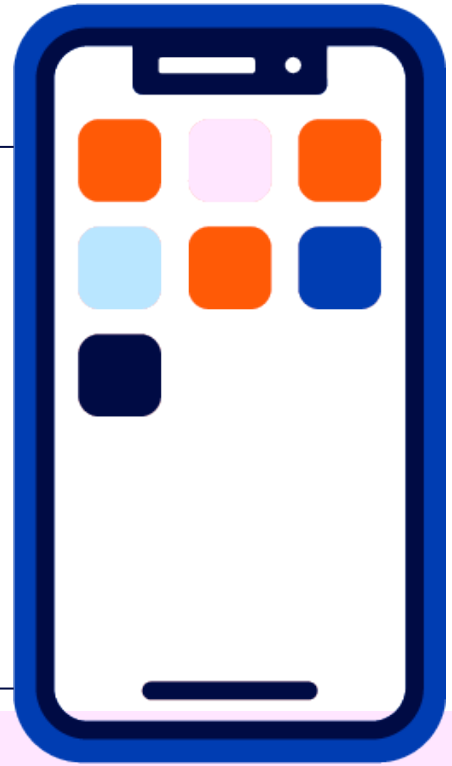
Little Moons had confidence that we had the manpower, knowledge, and ability to deliver across multiple roles and levels. Executive Network Group were tasked with mid to senior recruitment across the Manufacturing and Safety sectors, and so far, have worked on multiple recruitment projects including;

- Head of Health and Safety
- HSE Manager
- Operations Lead
- TPM Lead
- Maintenance Lead
- Process Lead

WWW.HSERECRUITMENT.COM

THE SEARCH

Each search begins with an in-depth briefing session with Little Moons and the appropriate account manager (a specialist in either Health and Safety in FMCG, or a manufacturing critical hire specialist) where the job specification is discussed, as well as culture fit and defined shortlisting timescales. Each search project combines traditional head hunt approaches, alongside referrals, and accessing our 20-year strong database of qualified candidates to present a shortlist to Little Moons, and dedicated support is provided through the interview, offer, and onboarding process. The recruitment partnership has been a very successful one with Executive Network Group successfully filling all roles provided so far.



WHAT LITTLE MOONS HAD TO SAY

“

Thank you ENG for your fantastic support and partnering during the exciting launch of our brand-new Kettering Factory. You've successfully sourced numerous candidates for professional roles – a considerable achievement. The team has consistently focused on matching not only essential skills but also cultural fit, aligning with our core values. Your professionalism and expertise in recruiting across diverse skill sets has been instrumental in building our workforce. Your responsiveness and ability to adapt to our evolving needs throughout the launch period has also been very much appreciated.

Thank you for all your efforts once again!

Gemma Chapman | Recruitment Lead

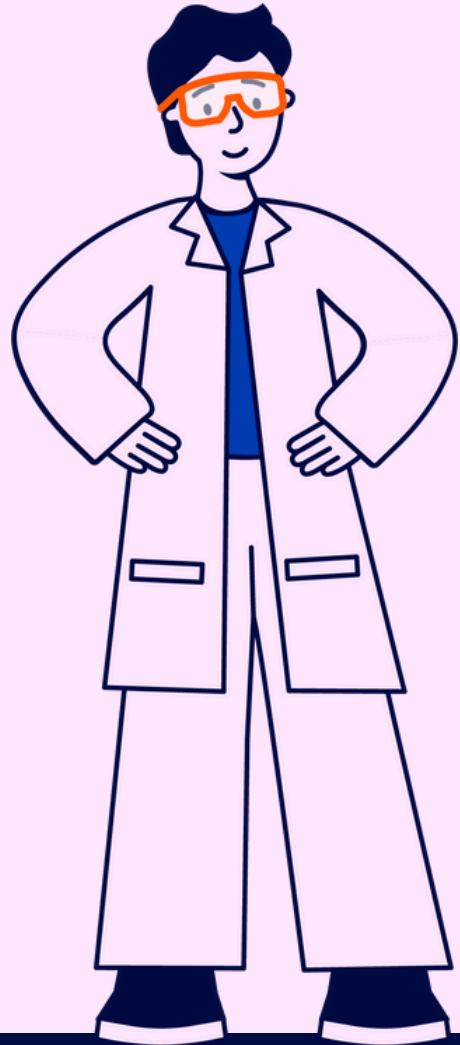
A QUOTE FROM SOPHIA

“

"Working with Little Moons has been a great process. Expectations are clear on both sides from the start, with great communication from Little Moons at briefing stage and throughout. Over the course of the project, we have been able to really refine our process due to increased understanding of Little Moons, their culture, and their likes and dislikes, and we love that they have embraced market feedback and our process. This is the very definition of a true recruitment partnership, and we look forward to working with them more in the future!"



HSE Recruitment Network



CONTACT US

LAURA AUCOTT

Associate Director

laura.aucott@hserecruitment.co.uk

0121 454 5000

HEAD OFFICE

info@hserecruitment.co.uk

0121 450 5000

